
Graffi's Add-O-Matic! 8

Auto-installer for Photoshop Elements 6, 7 & 8

Release Date: September 2009

THE FIRST AUTOMATIC ADD-ONS INSTALLER FOR PHOTOSHOP ELEMENTS 6, 7 & 8 *(Windows Only)*

Using AOM-8: Extract the **Add-O-Matic 8.exe** program from this zip archive, and save it in a convenient place on your computer. *(I recommend extracting it to **your My Documents** folder where you can get to it when you need it. You could also "pin" it to your start menu for even better access – see the screenshots on the next page)*

Double-click the **Add-O-Matic 8.exe** to start it. You'll see a large gray box to the lower right side of the application's panel. This is where you can drag and drop your add-on files. If multiple supported versions of Elements are found, click the version you want to add extras to.

Add-O-Matic will correctly install:

- **Custom Shapes (*.csh files)** : Custom Shapes will show up in the **Shapes** section of the **Effects** palette. ***NOTE: you'll have to choose the "Show All" option from the drop menu to see added Custom Shapes** They will also be installed to the pop-out menu in the **Custom Shapes Option Bar**, when the Custom Shapes tool is selected.

In addition, they are also used in conjunction with the Cutout tool and can be selected from that menu.

- **Layer Styles (*.asl files)**: Layer Styles will be installed into a new menu item in the **Effects** palette. Navigate to your added layer styles by using the right-side drop menu. Layer Styles will also be installed to the **Custom Shapes Option Bar**, in the *Style* section (use the drop menu to navigate to your new styles) as well as the Text tool's options bar at the top of the work area. This allows you to add a style to a shape or text as you create it, rather than adding it later.
- **Plug-Ins (*.8bf only)** will show up in the Filters menu. (Vista users must turn off Account protection!)
- **Actions (*.atn files)**: Actions will be installed to a separate menu item in the **Effects** palette. Choose the **Special Effects** section, and use the drop menu to choose "**Add-O-Matic**". Your actions will be here with a generic thumbnail. Actions will work, provided they are compatible with PSE6 commands. Actions will also appear in the Action Player in Guided Edit mode in Elements 7 & 8.
- **Brushes (*.abs files)** Brushes will be found in the Brushes palette. *(Keep in mind that some brush sets created with earlier versions of Photoshop/Elements may not be compatible with Photoshop Elements 6.0. A pop up will let you know if they aren't when you attempt to load incompatible sets from the brushes palette.)*
- **Gradients (*.grd files)** Gradients can be loaded from the drop menu of the Gradient tool's Options Bar at the top of the workspace when the Gradient tool is selected.
- **Patterns (*.pat files)** Patterns can be loaded when using the Edit>Fill menu command. Use the drop menu on this tool's dialog to select "Pattern" as type, and load the patterns you like from the triangle pop-out menu.
- **Color Swatches (*.aco & *.act files)** These will show up and can be loaded from the Swatches palette.

ERROR MESSAGES

If you inadvertently drag a non-supported file type into the gray box, the Add-O-Matic will let you know when you click GO!

A pop up message will tell you that the current file is not supported by **Add-O-Matic**. Common errors are dragging a zip archive to the gray box without first unzipping it, or grabbing a text file or a Word file. **Add-O-Matic** will let you know about the error, and continue on to the next file.

When **Add-O-Matic** turns the page for you, you can exit it and launch Photoshop Elements. The add-ons you've added will be in the locations outlined above.

SPECIAL NOTES ABOUT ELEMENTS ACTIONS

The database structure in Elements is different than earlier versions; therefore, Elements rebuilds its database each time it's restarted and it finds new things.

After adding actions (*.atn files), please allow Elements a few extra minutes when starting to rebuild itself before starting work (you can tell it's creating new database entries by a "flickering" cursor icon). If all of the actions you added aren't appearing in the palette, shut down Elements and restart again. This will usually clear it up. **Also, you can click into a different category on the Effects palette (Layer Styles, for example) and then click back into the Special Effects section.**

FEEDBACK & SUPPORT

Support is available in the Graficalicus Photoshop Elements Action Packs Forum, located here:
<http://www.graficalicus.com/index.php?name=PNphpBB2&file=viewforum&f=25>

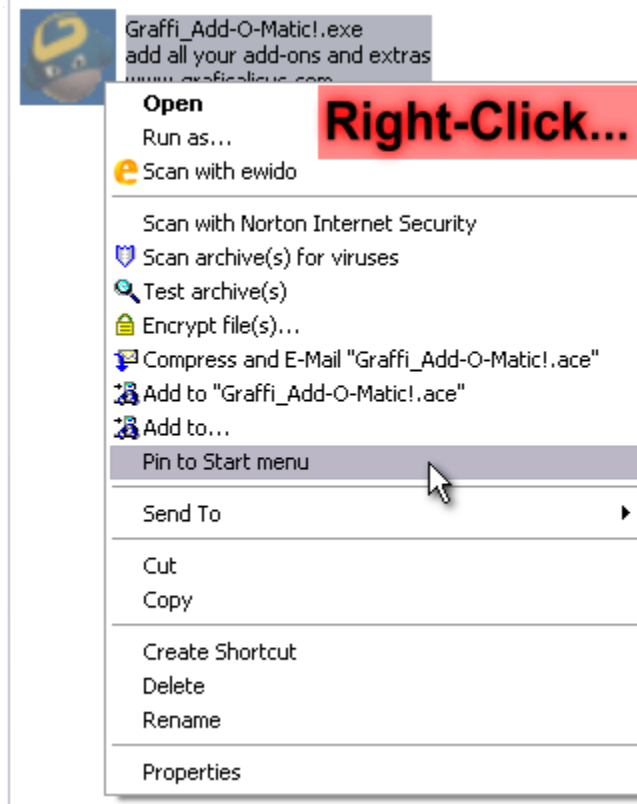
Thank you for downloading the Add-O-Matic!

~Graffi

September 25, 2009

To "Pin" Add-O-Matic to your Start Menu:

Locate the Add-O-Matic where you extracted it – preferably in **My Documents**. *Right-click* it, and choose **"Pin to Start menu"** from



Add-O-Matic is now permanently linked to your Start menu:

